

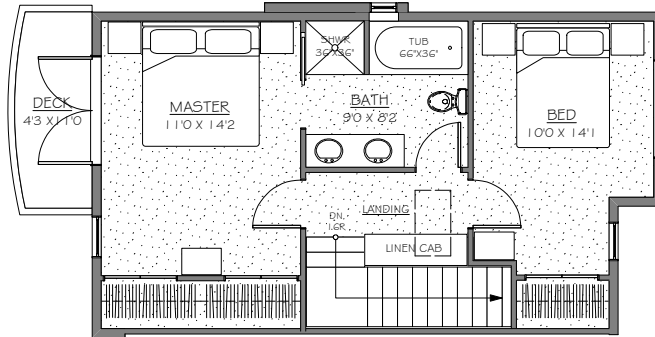


Bronte Heights Developments

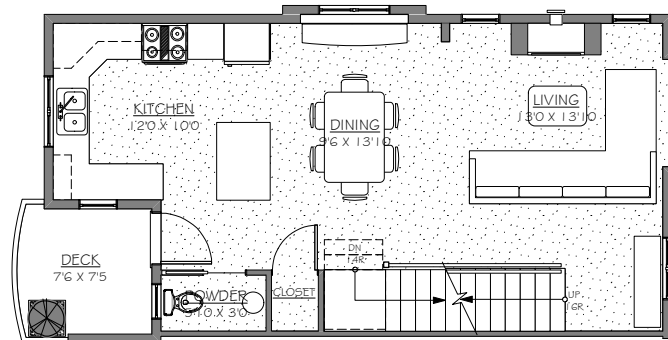


Greystoke Seven

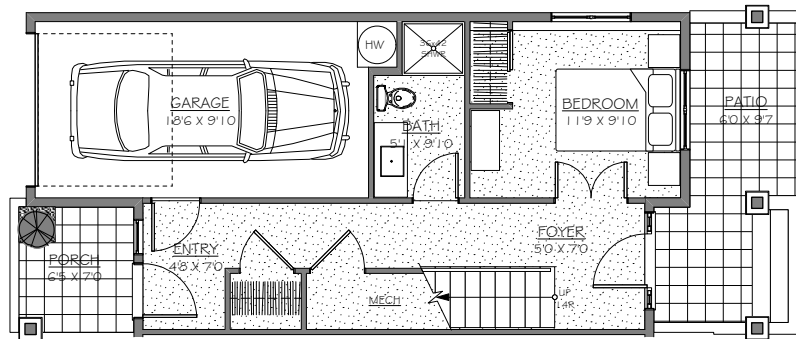
A COLLECTION OF SEVEN ENERGY EFFICIENT TOWNHOMES IN VICTORIA



UNIT 1 UPPER FLOOR PLAN



UNIT 1 MAIN FLOOR PLAN



UNIT 1 LOWER FLOOR PLAN

UPPER FLOOR	559
MAIN FLOOR	597
GROUND FLOOR	400
TOTAL	1559 SQUARE FEET
PATIOS	
DECK UPPER FLOOR	45
DECK MAIN FLOOR	54
REAR PORCH GROUND FLOOR	50
FRONT PORCH GROUND FLOOR	96
GARAGE	208
TOTAL	453 SQUARE FEET
TOTAL SQUARE FEET 2012	



Bronte Heights Developments

Call Us: 250.391.8550