

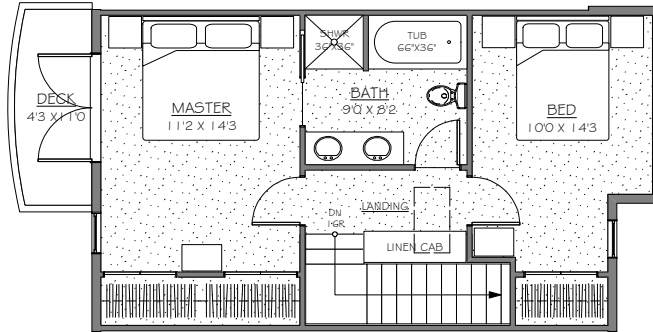


Bronte Heights Developments

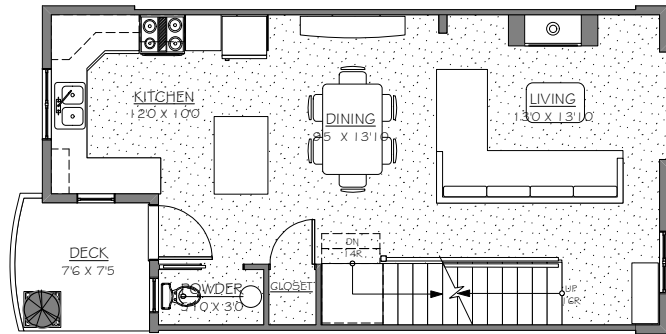


Greystoke Seven

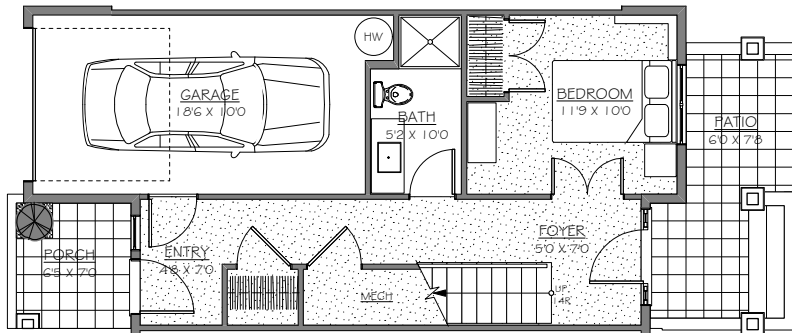
A COLLECTION OF SEVEN ENERGY EFFICIENT TOWNHOMES IN VICTORIA



UNIT 2 UPPER FLOOR PLAN



UNIT 2 MAIN FLOOR PLAN



UNIT 2 LOWER FLOOR PLAN

UPPER FLOOR	564
MAIN FLOOR	595
GROUND FLOOR	400
TOTAL	1559 SQUARE FEET
PATIOS	
DECK UPPER FLOOR	45
DECK MAIN FLOOR	54
REAR PORCH GROUND FLOOR	50
FRONT PORCH GROUND FLOOR	84
GARAGE	208
TOTAL	441 SQUARE FEET
TOTAL	SQUARE FEET 2000



Bronte Heights Developments

Call Us: 250.391.8550